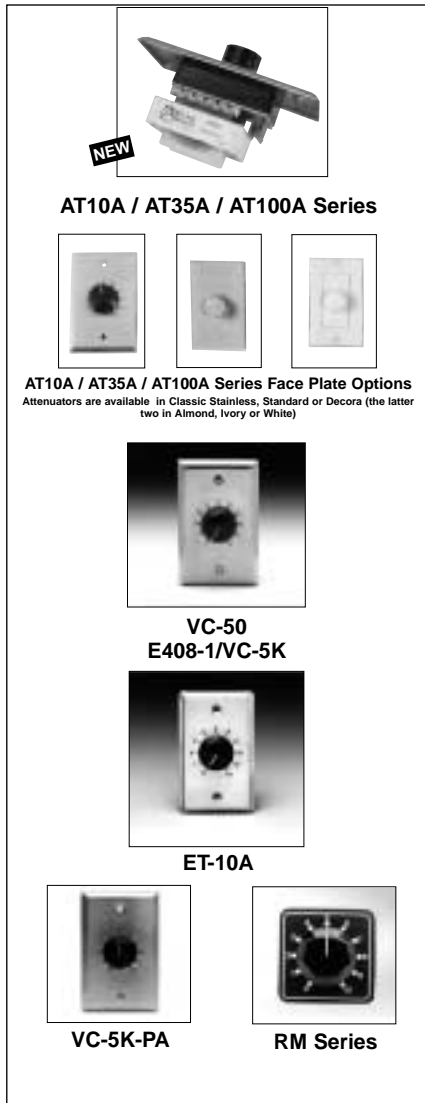




INDUSTRY STANDARD COMMERCIAL ATTENUATORS

AT Series, E408 Series,
ET-10A, and VC Series



AT10A / AT35A / AT100A Series

AT10A / AT35A / AT100A Series Face Plate Options
Attenuators are available in Classic Stainless, Standard or Decora (the latter two in Almond, Ivory or White)

VC-50
E408-1/VC-5K

ET-10A

VC-5K-PA

RM Series

AT10A (sc) (-PA) (-RM)
AT35A (sc) (-PA) (-RM)
AT100A (sc) (-PA) (-RM)

Faceplate Options:

S = S - Standard Style Faceplate
D - Decora Style Faceplate

A - Almond Color

C = I - Ivory Color

W - White Color

If there is not the above 2 letter suffix, the attenuator is shipped with the standard stainless steel faceplate or is the RM version without a faceplate.

(-RM)
Rack
Mount
Option

(-PA)
Priority
Announce
Circuit
Option

- Models Feature a Range of Attenuation Steps (3dB or 1.5dB Steps) as Well as Continuous to Meet Application and Budget Requirements
- Wall Plates are Stainless Steel with Stamped and Filled or Screen printed Dial Scale, and a Skirted Black Knob (White, Almond and Ivory Plastic Plates with Matching Skirted Knobs also available in both Standard and Decora Styles-AT Series Only)
- Popular Rack Mount Attenuator Versions are Available on the AT, E408, and VC Series for Mounting on to Blank Panels in Equipment Cabinets
- All Models Mount into Most 1-Gang E.O. Boxes.
- E408 Series are UL Listed

AT Series Industry Standard Auto Transformer. High-quality auto transformer series provides the advantages of excellent frequency response, low insertion loss and reliable performance for volume control application in 25 and 70.7-volt systems. Attenuation is accomplished in ten make before break steps plus positive off position. (No stop between maximum and off position to prevent switch damage). Contacts are silver plated for noise-free operation. Features a removable terminal block. Includes stainless steel plate, with stamped and filled or screen printed dial scale and a skirted black knob. (White, almond and ivory plastic plates with matching skirted knobs also available in both Standard and Decora styles-see AT model description chart)

ET-10A Economical Attenuator. Features a terminal strip in place of pigtail leads. The 10-watt unit may be used on 25 or 70.7-volt line. Attenuation is in ten steps plus positive off position. Switch incorporates a stop between maximum and off position. Stainless steel plate, silkscreened dial scale, and skirted black knob.

E408 Series Auto Transformer with Precision Level Control. Specially designed for attenuation in masking and sound reinforcement systems where fine tuning of level control is required. Series employs a ten-position, non-shorting rotary switch without stop. Attenuation rate is 1.5dB per step. (All other specifications are the same as the AT(A) Series including the UL listing.)

VC Series Potentiometer Attenuator. Economical attenuator provides level control for low-power loud-speaker circuits. Model VC-50 has 50-ohm impedance for application with 4, 8, and 16-ohm voice coil circuits. Model VC-5K has 5000-ohm impedance for use with constant voltage loudspeaker circuits. Control is continuously variable. Both models are capable of handling 3 watts D.C. Complete with stainless steel plate, stamped and filled dial scale and skirted black knob.

PA Series Priority Paging Option. Priority paging feature by-passes the effect of the attenuator to provide program level selection of individual emergency and paging signals at the amplifier. Option is available on all AT attenuators and Model VC-5K. The SPDT relay is operated with 24 VDC at 10mA. Includes protective relay cover to insure lasting trouble-free performance. Terminations to the relay and attenuator are made via a removable terminal block. (All other specifications except for dimensions are the same as selected AT and VC Series Models.)

RM Series Rack Mount Option. For attenuation convenience of rack-mounted equipment in cabinets and consoles, the AT, E408 and VC Series attenuators are available without mounting plate for rack panel installation. Attractive matte black polycarbonate dial scale overlay with adhesive backing replaces the mounting plate. Includes skirted black knob. Overlay size is 29 sq. (51mm). (To order, simply add RM after the selected attenuator model number. Example: AT10A-RM or AT10A-PARM.) (Dial scale overlays to retrofit existing installations are available, see hardware section Model HX23.)

MODEL	POWER RATING*	ATTENUATION PER STEP	TOTAL ATTENUATION	INSERTION LOSS	PLATE SIZE	RESISTANCE
★ AT10A(-PA)	10 Watts	3dB	33dB**	.4dB	1 gang	—
★ AT35A(-PA)	35 Watts	3dB	27dB	.6dB	1 gang	—
★ AT100A(-PA)	100 Watts	3dB	27dB	.6dB	1 gang	—
★ ET-10A	10 Watts	3dB	33dB**	.5dB	1 gang	—
★ E408-1	10 Watts	1.5dB	15dB	.4dB	1 gang	—
★ E408-3	35 Watts	1.5dB	15dB	.6dB	2 gang	—
★ E408-7	75 Watts	1.5dB	15dB	.6dB	2 gang	—
VC-5K(-PA)	3 Watts DC	Cont.	—	1dB	1 gang	5 K Ohms
VC-50	3 Watts DC	Cont.	—	1dB	1 gang	50 Ohms

* Continuous

** These units have two steps of 6dB before off position.
Note: Attenuation curve is steeper for a 25-volt line.



Specifications subject to change without notice



Northeast Total Communications

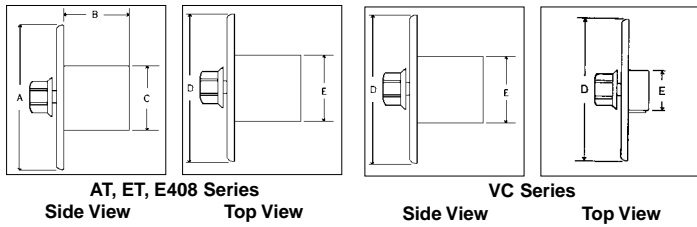
Toll free: (800)-362-7542 Fax: (215)-639-2476 E-mail: info@ntcinc.com

FOUR

ARCHITECT AND ENGINEER SPECIFICATIONS

ET-10A and AT Series. Attenuator(s) shall be Atlas Sound AT Series or Standard ET-10A Model _____ auto transformer or approved equal. The power rating shall be _____ and attenuation range shall be _____ dB. Attenuation per step for ET-_____ and AT-_____ shall be 8 steps of 3dB and 6dB each for the last two positions. Attenuator shall be a step type control with a positive off position. There shall be no stop between the maximum and off positions (AT Series only). Switch shall have silver plated contacts to eliminate noise and contact loss. All terminations must be made via a removable terminal block. Unit(s) shall be supplied with one of the following single gang face plates to be noted by model number suffix: Standard stainless steel faceplate (with dial scale to indicate attenuator position), Standard style plastic face plate-Almond color, standard style plastic face plate-Ivory color, Standard style plastic face plate-White color, Decora style plastic face plate-Almond color, Decora style plastic face plate-Ivory color, Decora style plastic face plate-White color. All models are designed to mount in a standard E.O. box.

E408. UL Listed attenuator shall be Atlas Sound Model _____ auto transformer or approved equal. The power rating shall be _____. The attenuation per step shall be 1.5dB. Unit shall be a step type control with a positive off position. There shall be no stop between the maximum and off positions. Switch shall have silver plated contacts to eliminate noise and contact loss. The attenuator



DIMENSIONAL SPECIFICATIONS - PLATE MOUNTED ATTENUATORS					
MODEL	A	B	C	D	E
NEW AT10A	4 1/2"	2 1/8"	2 3/4"	2 3/4"	1 3/4"
NEW AT10A-PA	4 1/2"	2 1/8"	2 3/4"	2 3/4"	1 3/4"
NEW AT35A	4 1/2"	2 1/8"	2 15/16"	2 3/4"	1 15/16"
NEW AT35A-PA	4 1/2"	2 1/8"	2 15/16"	2 3/4"	1 15/16"
NEW AT100A	4 1/2"	2 1/2"	2 15/16"	2 3/4"	1 15/16"
NEW AT100A-PA	4 1/2"	2 1/2"	2 15/16"	2 3/4"	1 15/16"
ET-10A	4 1/2"	2 1/16"	2 1/16"	2 3/4"	1 1/16"
E408-1	4 1/2"	2 1/8"	1 1/2"	2 3/4"	1 1/16"
E408-3	4 1/2"	2 5/16"	1 3/4"	4 9/16"	1 5/16"
E408-7	4 1/2"	2 5/8"	2 1/16"	4 9/16"	2 5/16"
VC-5K (-50)	4 1/2"	5/8"	1 1/4"	2 3/4"	—
VC-5K-PA	4 1/2"	1 1/4"	2"	2 3/4"	1 1/2"

NEW
NEW
NEW
NEW
NEW
NEW

For information on Atlas Sound Stereo Attenuators (DAT Series and SAT Series), refer to specification sheet #SL4-1523.

For information on Atlas Sound WhisperTouch Stereo Attenuators:

- Original 8 Ohm #SL4-1570
- Switched 8 Ohm #SL4-1571
- 70 Volt Stereo & Mono #SL4-1568
- Switched 70 Volt Stereo & Mono #SL4-1569
- Switched Summing to Mono 8 Ohm #SL4-1589
- and Summing to Mono 8 Ohm #SL4-1588

shall be mounted to a standard gang stainless steel wall plate which mounts to a standard E.O. box.

VC Series. Potentiometer attenuator shall be Atlas Sound Model _____ (VC-5K or VC-50) or approved equal with a power rating of 3 watts DC. Attenuator shall be continuously variable with no stop position and shall have a dial scale to indicate attenuator position. Unit shall be mounted to a standard one gang stainless steel wall plate which mounts a standard E.O. box.

RM Option. Attenuator shall be Atlas Sound Model _____ [(AT, E408, or VC Series (-RM))] or approved equal. Face plate shall be replaced by an adhesive matte black polycarbonate dial scale escutcheon for attachment to a rack mount panel. Escutcheon size shall be 2" SQ..

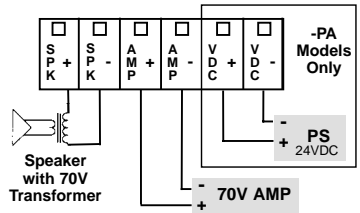
PA Option. Specified AT Series attenuator or Model VC-5K shall include a priority relay. Relay shall be an SPDT, 24 VDC type securely mounted to the attenuator assembly wired at the factory. Relay shall include a protective cover.

WIRING-AT/ET SERIES

Each terminal will hold up to 2-16AWG Stranded wire. For larger wires or home run situations, a small length of wire and a wire nut are recommended.

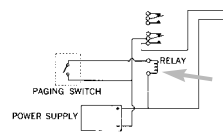
Attach wire according to label on terminal block as shown to the right (Non-PA Models will not have the "VDC+" and "VDC-" terminals).

* Install the unit with the terminal block on top. This will ensure that the off position is on the bottom.



(-PA) PRIORITY ATTENUATORS

POWER SWITCHING REQ. FOR - PA ATTENUATORS

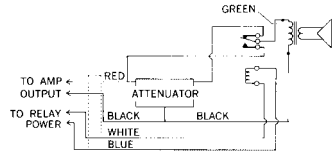


Use 2nd external relay when paging switch is part of a paging microphone. This will reduce hum and noise pickup from the mic.

RELAY SPECIFICATIONS

- COIL VOLTAGE: 24VDC
- COIL CURRENT: 10MA
- CONTACTS: SPDT-2AMP Rating
- Relay has a protective cover

SCHEMATICS FOR PRIORITY ATTENUATORS



WIRING REQUIREMENTS; (1) PAIR FOR AUDIO, (1) PAIR FOR RELAY

Specifications subject to change without notice



Northeast Total Communications

Toll free: (800)-362-7542 Fax: (215)-639-2476 E-mail: info@ntcinc.com



DAT-8-W*
DAT-10-W*

SAT-8-35-W

SAT-8-W
SAT-10-W
SAT-35AW

*Decora-style devices require a cover plate
(this is a standard item typically ordered in bulk with other electrical supplies).

FEATURES

- Attractive Volume Controls are Offered in 10, 35, 40, and 100-Watt RMS Models
- All Styles have 9 or 10-Step Attenuation Plus Positive Off
- Units Install in a Standard E.O. Box
- Choose from Two-Piece Decora®-Style or Standard Plastic Wallplate

GENERAL DESCRIPTION

DAT / SAT Series. Atlas Sound offers traditional autoformer controls to provide excellent stereo performance and maximum speaker-handling capability. Models include positive off, and full-power pass through at the maximum setting. Contacts are make-before-break for smooth transition. Models with 8-ohm impedance are suitable for residential stereo and voice-coil circuit application. Models for 25 or 70.7 volt use provide level control in distributed constant-voltage systems. Single-gang models mount standard E.O. boxes 2½" deep. Two-gang models mount E.O. boxes 3" deep. Choose Decora-Style (DAT) or standard plate (SAT) versions in ivory (-I) or white (-W).

- Choose DAT or SAT Series to control speaker volume when impedance matching is not necessary such as single-pair installations or when multi-channel amplifiers are used for individual zones.
- Combine DAT or SAT Series with a separate impedance-matching switching device (AST Series) to design a system with multiple loud-speaker pairs.
- For information on Atlas Sound Mono Attenuators (AT Series, E408 Series, ET-10A, LA Series and VC Series), refer to specification sheet #SL4-1530.

FOUR

ATTENUATOR SPECIFICATIONS

MODEL	COLOR	POWER RATING RMS/Ch.	SYSTEM		POSITIONS	ATTENUATION		INSERTION LOSS	MOUNTING SIZE	WEIGHT (LBS.)
			IMPEDANCE	VOLTAGE		TOTAL	PER STEP			
DAT-8-I	Ivory	40 watts	8 Ohms		9-Off	30dB	3dB**	.5dB	1 gang	.8
DAT-8-W	White	40 watts	8 Ohms		9-Off	30dB	3dB**	.5dB	1 gang	.8
DAT-10-I	Ivory	10 watts		25 or 70.7V	9-Off	27dB	3dB*	.5dB	1 gang	.8
DAT-10-W	White	10 watts		25 or 70.7V	9-Off	27dB	3dB*	.5dB	1 gang	.8
SAT-8-I	Ivory	40 watts	8 Ohms		9-Off	30dB	3dB**	.5dB	1 gang	.8
SAT-8-W	White	40 watts	8 Ohms		9-Off	30dB	3dB**	.5dB	1 gang	.8
SAT-10-I	Ivory	10 watts		25 or 70.7V	9-Off	27dB	3dB*	.5dB	1 gang	.85
SAT-10-W	White	10 watts		25 or 70.7V	9-Off	27dB	3dB*	.5dB	1 gang	.85
SAT-35AI	Ivory	35 watts		25 or 70.7V	10-Off	27dB	3dB*	.5dB	1 gang	1.8
SAT-35AW	White	35 watts		25 or 70.7V	10-Off	27dB	3dB*	.5dB	1 gang	1.8
SAT-8-35-I	Ivory	100 watts	8 Ohms		10-Off	33dB	3dB**	.5dB	2 gang	1.7
SAT-8-35-W	White	100 watts	8 Ohms		10-Off	33dB	3dB**	.5dB	2 gang	1.7

Note: Attenuation curve is steeper for a 25V line.

*These units have one step of 6dB before off position.
**These units have two steps of 6dB before off position.

Specifications subject to change without notice

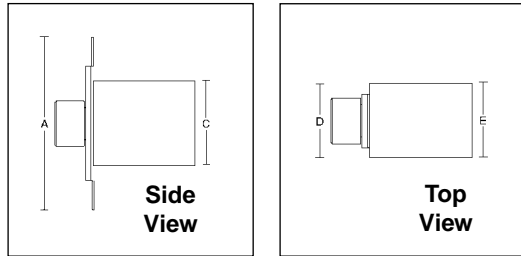


Northeast Total Communications

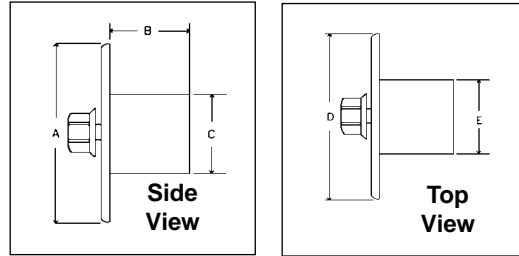
Toll free: (800)-362-7542 Fax: (215)-639-2476 E-mail: info@ntcinc.com

ATTENUATOR DIMENSIONS

DAT Series



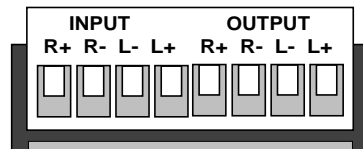
SAT Series



MODEL	A	B	C	D	E
DAT-8-(I)(W)	4 $\frac{1}{16}$ "* (103mm)	2 $\frac{1}{2}$ " (64mm)	2 $\frac{9}{16}$ " (65mm)	1 $\frac{5}{16}$ " (33mm)	1 $\frac{15}{16}$ " (49mm)
DAT-10-(I)(W)	4 $\frac{1}{16}$ "* (103mm)	2 $\frac{1}{2}$ " (64mm)	2 $\frac{9}{16}$ " (65mm)	1 $\frac{5}{16}$ " (33mm)	1 $\frac{15}{16}$ " (49mm)
SAT-8-(I)(W)	4 $\frac{1}{2}$ " (114mm)	2 $\frac{1}{2}$ " (64mm)	2 $\frac{9}{16}$ " (65mm)	2 $\frac{3}{4}$ " (70mm)	1 $\frac{15}{16}$ " (49mm)
SAT-10-(I)(W)	4 $\frac{1}{2}$ " (114mm)	2 $\frac{1}{2}$ " (64mm)	2 $\frac{9}{16}$ " (65mm)	2 $\frac{3}{4}$ " (70mm)	1 $\frac{15}{16}$ " (49mm)
SAT-35A(I)(W)	4 $\frac{1}{2}$ " (114mm)	2 $\frac{1}{2}$ " (64mm)	2 $\frac{9}{16}$ " (65mm)	2 $\frac{3}{4}$ " (70mm)	1 $\frac{15}{16}$ " (49mm)
SAT-8-35-(I)(W)	4 $\frac{1}{2}$ " (114mm)	2 $\frac{1}{16}$ " (68mm)	2 $\frac{9}{16}$ " (59mm)	4 $\frac{1}{2}$ " (114mm)	3" (76mm)

NOTE: All knobs protrude 7/8" (22mm) from the face plate.

SCHEMATIC DIAGRAM FOR THE DAT AND SAT SERIES



ARCHITECT AND ENGINEER SPECIFICATIONS

DAT Series. Stereo attenuator for voice coil circuit application shall be Atlas Sound Model Series DAT-8, providing 40 watts RMS at 8 Ohms. Stereo attenuator for 25/70.7 volt distributed sound systems shall be Atlas Sound Series DAT-10 providing 10 watts RMS. Attenuation on the DAT-8 shall be accomplished in 9 steps with a positive off position (the two lowest steps of 6dB, and the next 7 steps of 3dB, for a total attenuation of 30dB). Attenuation on the DAT-10 shall be accomplished in 9 steps with a positive off position (the lowest step of 6dB, and the next 8 steps of 3dB, for a total attenuation of 27dB). Insertion loss shall be no greater than .5dB. The DAT Series shall mount to a standard one gang E.O. box.

Cover Plates, which are ordered separately, for the DAT Series shall be Decora®-style one-gang, two-gang, or three-gang Model (order separately). All DAT Series mount to standard E.O. Boxes.

SAT Series. Stereo attenuator for voice coil circuit application shall be Atlas Sound Model Series _____ (SAT-8, SAT-8-35), providing _____ watts (SAT-8: 40 watts, SAT-8-35: 100 watts) RMS at 8 Ohms. Stereo attenuator for 25/70.7 volt distributed sound systems shall be Atlas Sound Series _____ (SAT-10, SAT-35) providing _____ watts (SAT-10: 10 watts, SAT-35: 35 watts) RMS.

Attenuation on the SAT-8 shall be accomplished in 9 steps plus a positive off position (the two lowest steps of 6dB, and the next 7 steps of 3dB, for a total attenuation of 30dB). Attenuation on the SAT-10 shall be accomplished in 9 steps with a positive off position (the lowest step of 6dB, and the next 8 steps of 3dB, for a total attenuation of 27dB). Insertion loss shall be no greater than .5dB. All models except SAT-8-35 mount to a standard one gang E.O. box. SAT-8-35 mounts to a 2-gang E.O. box. Face plates for the SAT Series shall be one-piece plastic, in choice of White (-W) or Ivory (-I) with a matching round knob.

Decora® is a registered Trademark of Leviton Corporation.

Specifications subject to change without notice



Northeast Total Communications

Toll free: (800)-362-7542 Fax: (215)-639-2476 E-mail: info@ntcinc.com